

# 300ml CHEMICAL MORTAR

## Curing Times 300ml

BASE MATERIAL TEMPERATURE (°C)	WORKING TIME	CURING TIME
30	3mins	25mins
20	7mins	50mins
10	22mins	1hour 30mins
5	30mins	3hours 20mins

## Cartridge & Stud Data 300ml Cartridge

STUD THREAD SIZE (mm) (d)	STUD OVERALL LENGTH (mm) (l)	WASHER DIAMETER (mm) (D <sub>w</sub> )	MAXIMUM FIXTURE THICKNESS (mm) (T <sub>fix</sub> )	HOLE DIAMETER IN CONCRETE (mm) (d <sup>o</sup> )	HOLE DIAMETER IN FIXTURE (mm) (d <sub>f</sub> )	STANDARD EMBEDMENT IN CONCRETE (mm) (h <sub>o</sub> )	RECOMMENDED TORQUE (Nm) (T <sub>inst</sub> )		APPROX No. OF HOLES PER 300ML CARTRIDGE
							CONCRETE	BRICKWORK	
M8	110	17	17	10	9	80	11	2	66
M10	130	21	28	12	11	90	22	6	48
M12	160	24	36	14	13	110	38	11	33
M16	190	30	42	18	17	125	95	25	22
M20	260	37	90	24	22	145	150		6
M20 DEEP	260	37	55	24	22	180	150		5
M24	295	44	85	28	26	180	200		5
M24 DEEP	295	44	55	28	26	210	200		4

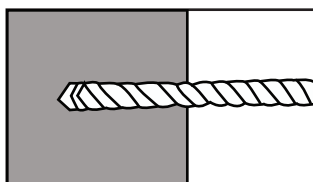
The specification of longer studs will allow greater fixture thickness than shown for the standard studs quoted. Minimum embedment should be observed.

Note: For perforated brickwork and hollow blockwork a mesh sleeve must be inserted into the hole prior to the resin being pumped.

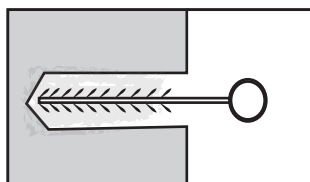
We recommend that for embedment above 500mm and 20mm in diameter a power operated resin gun should be used

## Installation

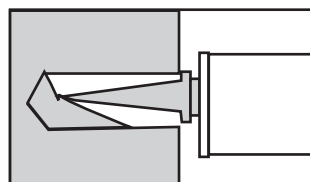
### INSTALLATION Solid substrates



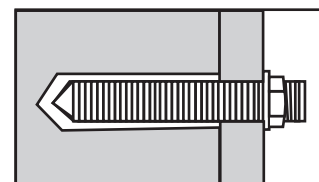
1. Drill hole to correct diameter and depth for stud size being used.



2. Clean the hole using brush and air three times.

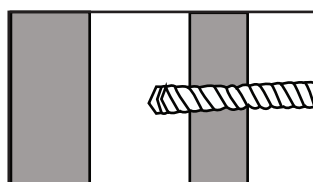


3. Insert cartridge into cartridge gun and attach nozzle. Dispense to waste until an even colour and pump into hole.

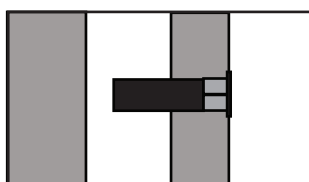


4. Insert stud or socket with a twisting action. Leave the anchor undisturbed until the resin has cured and then attach fixture.

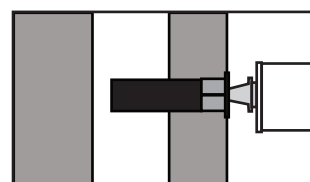
### INSTALLATION Hallow substrates & substrates with voids



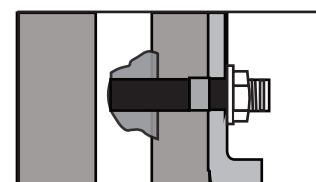
1. Drill hole to correct diameter and depth for mesh sleeve size being used.



2. Insert sleeve into hole.



3. Insert cartridge into cartridge gun and attach nozzle. Dispense even colour. Then insert nozzle and pump to fill sleeve.



3. Insert stud or socket with a twisting action. Leave the anchor undisturbed until the resin has set and then attach fixture.